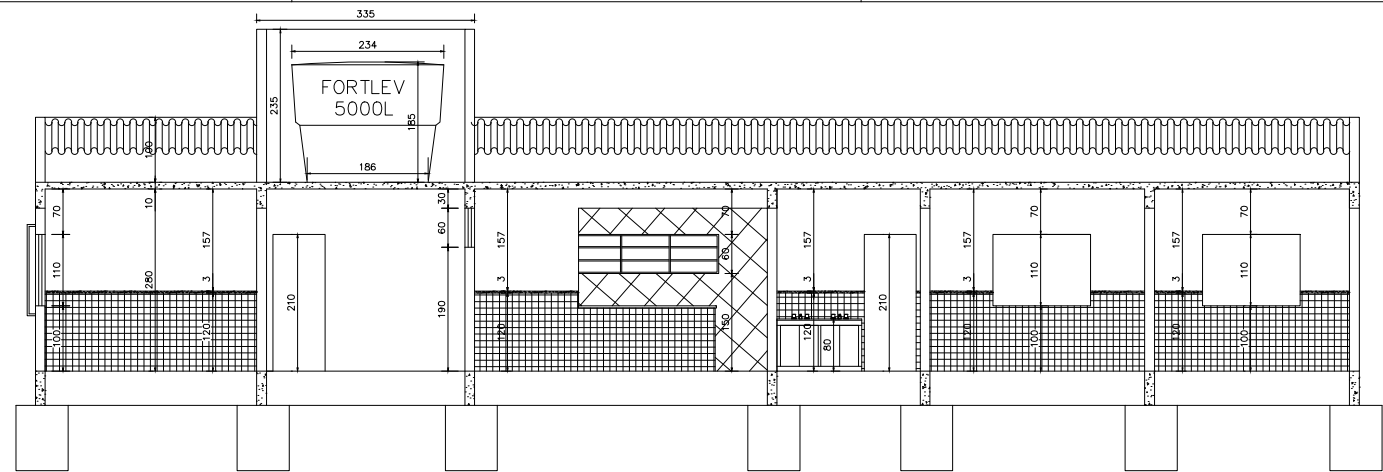
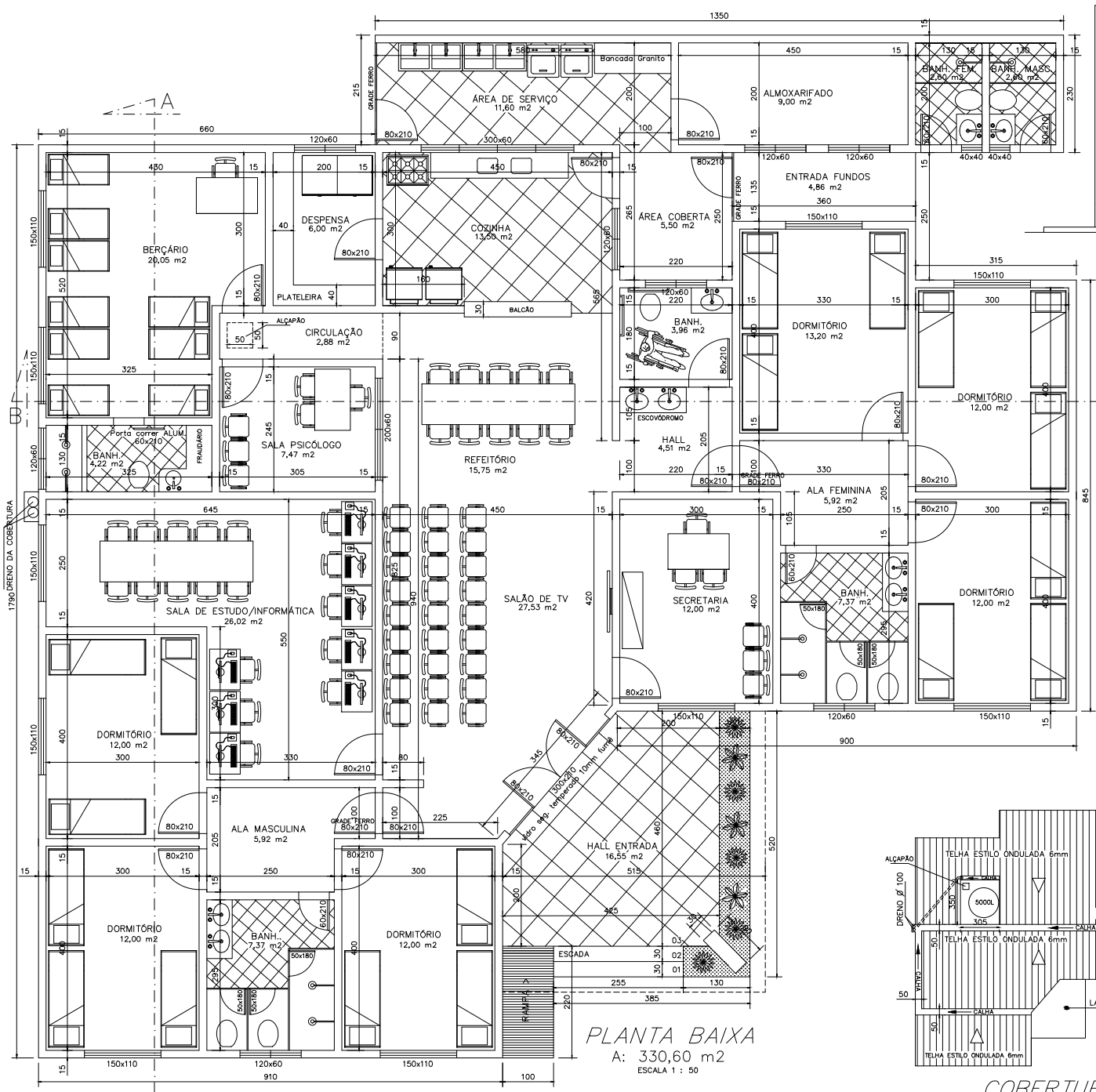


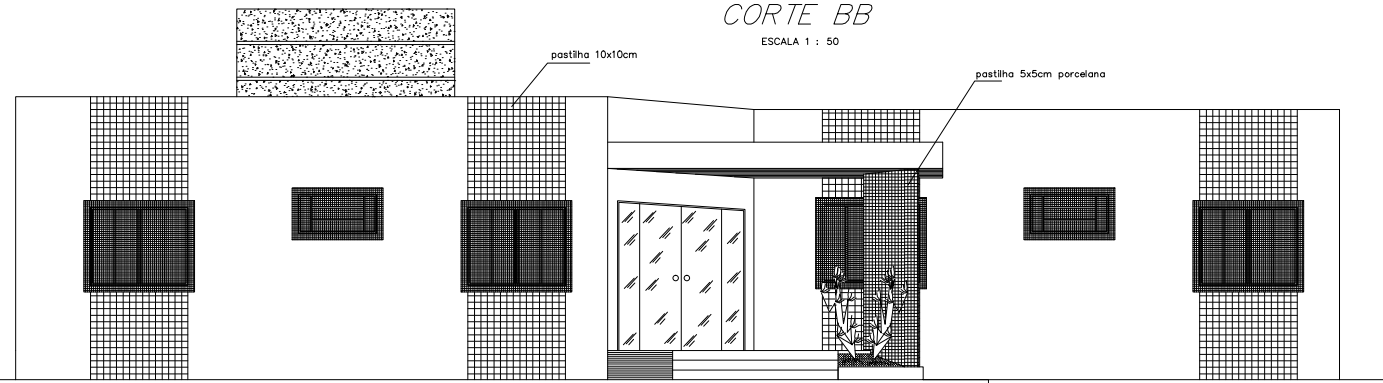
CORTE AA
ESCALA 1 : 50



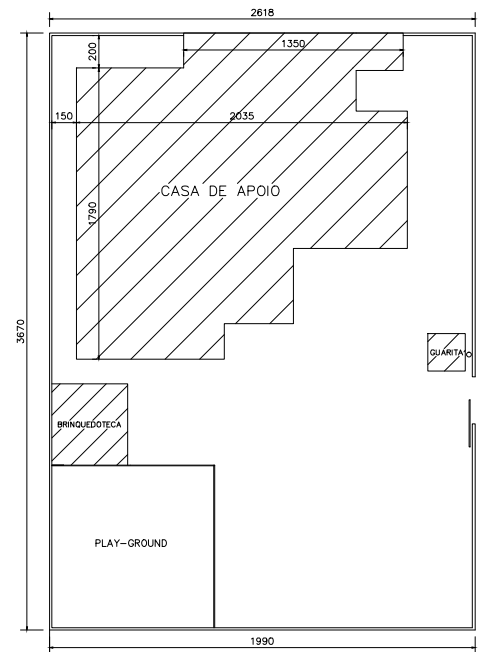
CORTE BB
ESCALA 1 : 50



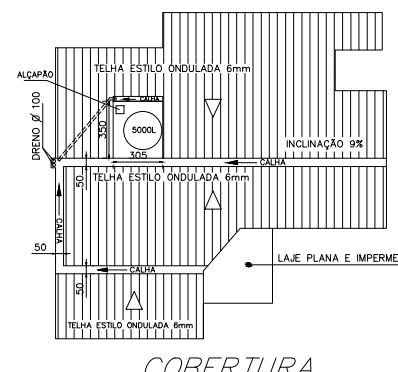
PLANTA BAIXA
A: 330,60 m²
ESCALA 1 : 50



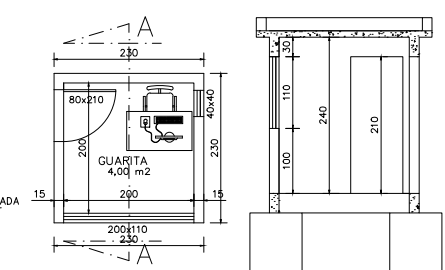
FACHADA
ESCALA 1 : 50



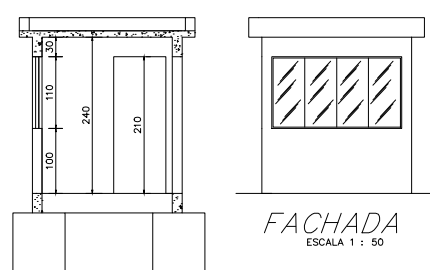
PLANTA DE SITUACAO
ESCALA 1 : 200



COBERTURA
ESCALA 1 : 200



PLANTA BAIXA
A: 5,29 m²
ESCALA 1 : 50



FACHADA
ESCALA 1 : 50

	PREFEITURA MUNICIPAL DE PRESIDENTE KENNEDY SECRETARIA MUNICIPAL DE OBRAS	
	PROJETO ARQUITETONICO PARA CONSTRUÇÃO DE CASA DE APOIO	
LOCAL : AVENIDA ORESTES BAILESI - SEDE - PRESIDENTE KENNEDY - ES		
CONTEUDO: PLANTA BAIXA FACHADA COBERTURA CORTE AA, BB PLANTA DE SITUACAO	DESENHO	RESPONSÁVEL TÉCNICO:
FOLHA: 1/1	ADMINISTRAÇÃO: AMANDA QUINTA RANGEL PREFEITA MUNICIPAL	RESPONSÁVEL TÉCNICO: